



Sudesh Group



SPRINKLER System



Potable &
Light Weight



Suitable for Chemicals,
Fertilizers & Pesticides



Easy to
Handle



Apollo Pipes Ltd.

Email: info@apollopipes.com | Web: www.apollopipes.com



1800-121-3737
011-43334000

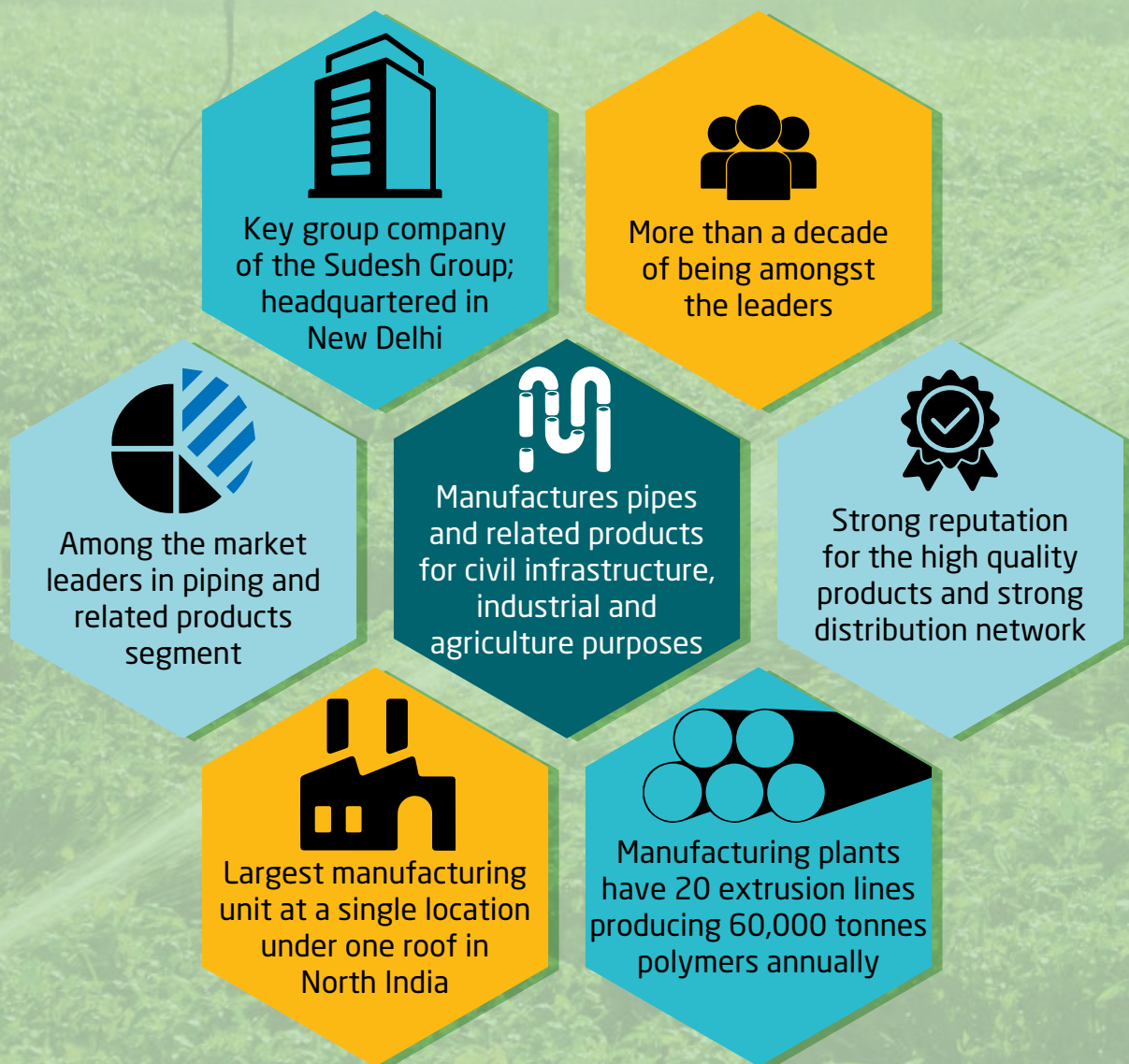


Products: CPVC PIPES & FITTINGS | uPVC PLUMBING SYSTEM | PRESSURE PIPES & FITTINGS | SWR DRAINAGE SYSTEM | COLUMN PIPES | WELL CASING PIPES | HDPE PIPES | SPRINKLER SYSTEM

About Apollo Pipes

APOLLO PIPES LTD. is the key group company of Sudesh Group. The company has an enriching experience of decades in manufacturing pipes and related products for all purposes. With a manufacturing plant having 20 extrusion lines and producing 60,000 tonnes of polymers annually, APOLLO PIPES LTD. has the largest manufacturing unit at a single location under one roof in North India. APOLLO PIPES LTD. business activities are focused on development, manufacturing and distribution of Plastic Piping Systems under the brand name of APL APOLLO.

APOLLO PIPES have plants located at Dadri, Sikandrabad (Uttar Pradesh) and Ahmedabad (Gujarat). The plants use flexible manufacturing techniques, greener technologies and modern machinery. We strictly follow the national and international standards while manufacturing all kinds of CPVC Pipes and Fittings, uPVC Plumbing System, uPVC SWR Piping Systems, uPVC Pressure Pipes and Fittings, Elastomeric (Ring Fit Pipes), Column Pipes, uPVC Well Casing Pipes, HDPE Pipes, Sprinkler System and Cable Ducts.



HDPE Sprinkler System

Sprinkler Irrigation is a method of applying irrigation water which is similar to rainfall. Water is distributed through a system of pipes usually by pumping. It is then sprayed into the air to help irrigate entire soil surface through spray heads so that it breaks up into small water drops which fall to the ground.

Sprinklers provide efficient coverage for small to large areas and are suitable for use on all types of properties. It is also adaptable to nearly all irrigable soils since sprinklers are available in a wide range of discharge capacity.

APL Apollo Sprinkler System is an unique irrigation system. It is designed to ensure maximum water saving, combining high quality, affordability and ease of installation. All the products are made out of high strength & chemical resistance engineering plastics to achieve functional satisfaction and to maintain cost economics.

Applications

- Suitable for almost all field crops like wheat, gram, pulses as well as vegetables, cotton, soya bean, tea, coffee, and other fodder crops.
- Suitable for residential, industrial, hotel, resorts, public & government enterprises, golf links, race courses.

All sprinklers undergo extensive quality testing in our well-equipped state-of-the-art lab. Moreover, performance of the products are also tested in the field to ensure uniform water distribution and higher efficiency

Size	Outside Diameter		Wall Thickness (mm)								
			Class 1 (0.25 Mpa)		Class 2 (0.32 Mpa)		Class 3 (0.4 Mpa)		Class 4 (0.6 Mpa)		
	Min.	Max.	Min.	Max.	Min.	Max.	Min.	Max.	Min.	Max.	
40	40	40.4								2.3	2.8
50	50	50.5					2.0	2.4		2.9	3.4
63	63	63.6			2.0	2.4	2.5	2.9		3.8	4.4
75	75	75.7	2.0	2.4	2.5	2.9	3.0	3.4		4.5	5.2
90	90	90.8	2.2	2.6	2.9	3.4	3.5	4.1		5.3	6.1
110	110	111.0	2.7	3.2	3.4	3.9	4.2	4.8		6.5	7.4
125	125	126.2	3.1	3.6	3.8	4.5	4.8	5.5		7.4	8.3
140	140	141.3	3.5	4.1	4.3	5.0	5.4	6.1		8.3	9.3
160	160	161.5	3.9	4.5	4.9	5.6	6.2	7.0		9.4	10.6
180	180	181.7	4.4	5.0	5.5	6.3	6.9	7.8		10.6	11.9
200	200	201.8	4.9	5.6	6.1	7.0	7.7	8.7		11.8	13.2

Size	Class	Outside Diameter		Wall Thickness		Standard Coil Length (Meters)
		Min.	Max.	Min.	Max.	
12	2	12	12.3	0.9	1.1	500
16	2	16	16.3	1.1	1.3	400



HDPE Sprinkler Irrigation System IS:14151-1994 (KAN Type)

S.NO.	Description	63 MM	75 MM	90 MM	110 MM	125 MM
1	"HDPE Pipe duly coupled IS: 14151 (Class-I) 6Mtr. Including Rubber Gasket & Latch Clamp"	✗	✓	✓	✓	✓
2	"HDPE Pipe duly coupled IS: 14151 (Class-II) 6Mtr. Including Rubber Gasket & Latch Clamp"	✓	✓	✓	✓	✓
3	HDPE Pipe Duly Coupled 3 Mtr.(Class-I)	✓	✓	✓	✓	✓
4	HDPE Plain Pipe IS: 14151 (Class-I)	✗	✓	✓	✓	✓
5	HDPE Plain Pipe IS: 14151 (Class-II)	✓	✓	✓	✓	✓
6	Bend With Coupler	✓	✓	✓	✓	✓
7	Tee With Coupler	✓	✓	✓	✓	✓
8	PCN (Pump Connecting Nipple) (LONG)	✓	✓	✓	✓	✗
9	PCN (Pump Connecting Nipple) (SHORT)	✓	✓	✓	✓	✓
10	End Cap with Clamp	✓	✓	✓	✓	✓
11	Sprinkler Adopter With Foot Batton	✓	✓	✓	✓	✗
12	Sprinkler Adopter With foot batton (HEAVY)	✓	✓	✗	✗	✗
13	"APL APOLLO" Brand, Medium Class Riser Pipe	✓	✓	✓	✓	✓
14	Sprinkler Nozzel	✓	✓	✓	✓	✓
15	Extra Rubber Ring	✓	✓	✓	✓	✓
16	Extra Clamp	✓	✓	✓	✓	✓
17	REDUCER With Coupler 75MMX63MM	155	90X75MM	175	110x90MM	225

HDPE Sprinkler System IS: 14151 (C Type)

S.NO.	Description	63 MM	75 MM	90 MM	110 MM	125 MM
1	"HDPE Pipe duly coupled IS: 14151 (Class-I) 6Mtr. Including Rubber Gasket & Latch Clamp"	✗	✓	✓	✓	✗
2	"HDPE Pipe duly coupled IS: 14151 (Class-II) 6Mtr. Including Rubber Gasket & Latch Clamp"	✓	✓	✓	✓	✗
3	HDPE Pipe Duly Coupled 3 Mtr.	✓	✓	✓	✓	✗
4	Bend With Coupler	✓	✓	✓	✓	✗
5	Tee With Coupler	✓	✓	✓	✓	✗
6	PCN (Pump Connecting Nipple) (LONG)	✓	✓	✓	✓	✗
7	PCN (Pump Connecting Nipple) (SHORT)	✓	✓	✓	✓	✗
8	End Cap	✓	✓	✓	✓	✗
9	Sprinkler Adopter With Foot Batton	✓	✓	✓	✓	✗
10	"APL APOLLO" Brand, Medium Class Riser Pipe	✓	✓	✓	✓	✗
11	Sprinkler Nozzel	✓	✓	✓	✓	✗
12	Extra Rubber Ring	✓	✓	✓	✓	✗
13	REDUCER With Coupler 75MMX63MM	✓	✓	✓	✓	✓

HDPE Sprinkle Bare Fittings (Plain)

S.NO.	Description	63 MM	75 MM	90 MM	110 MM	125 MM
1	COUPLER (HEAD)	✗	✓	✓	✓	✗
2	COUPLER (TAIL)	✗	✓	✓	✓	✗
3	END CAP (PLAIN)	✗	✓	✓	✓	✗
4	BEND (PLAIN)	✗	✓	✓	✓	✗
5	TEE (PLAIN)	✗	✓	✓	✓	✗
6	REDUCER 110MMX90MM (PLAIN)	✓	✗	✗	✗	✗
7	REDUCER 90MMX75MM (PLAIN)	✓	✗	✗	✗	✗



HDPE Sprinkle Bare Fittings (Plain)



Our Product Range

- CPVC Pipes & Fittings** : APL Apollo CPVC Pipes & Fittings (as per ASTM D-1784, ASTM D-2846, ASTM F-439, ASTM F-441, ASTM F-438 & ASTM F-493) is a safe, long lasting and cost-effective solution for hot and cold water. This system is suitable for all plumbing and potable water application.
- uPVC Plumbing System** : APL Apollo uPVC Plumbing System (as per ASTM D-1785 & ASTM D-2467) being lead-free and non-toxic is favourable for carrying potable water. It is used for high pressure water distribution plumbing in residential, commercial and industrial buildings.
- Pressure Pipes & Fittings** : These pipes and fittings are used in variety of applications like irrigation , water supply, industrial process line, swimming pools, fire fighting, etc.
- SWR Drainage System** : APL Apollo uPVC SWR Piping System (as per IS:14735-99 & IS:13592-92) is an easy & economical product, ideal for drainage of soil waste and rain water application in residential, commercial and Industrial buildings.
- Column Pipes** : APL Apollo Column Pipes are manufactured for borewell / submersible pumps which offer many advantages like-light weight, high tensile load capacity, leak-proof joints and long life with economy and hence, emerges as the best option for conventional metal pipes.
- Well Casing Pipes** : APL Apollo uPVC Well Casing Pipes an ideal preference for applications like protection of domestic, irrigation, industrial and mining borewells.
- HDPE Pipes** : HDPE is strongly resistant to stress cracking and has low creep rupture properties. It has excellent insulation properties over a wide range of frequencies and is not chemically active.

Apollo Pipes Ltd.

37, Hargobind Enclave, Vikas Marg, New Delhi - 110092

Email: info@apollopipes.com | Web: www.apollopipes.com



1800-121-3737
011-43334000